

**6D4N**

TOUR CODE: 6BSH

BEST SEASON IN HOKKAIDO

Furano Flower Fields • Biei Patchwork Hill • Romantic Otaru • Bear Ranch • Samurai Village


ALL YOU CAN EAT!!!
 Japanese Shabu-Shabu

ALL YOU CAN EAT!!!
 BBQ + 3 Types of Crab

★ ALL INCLUSIVE FARE ★

1 N' HILTON
 Niseko Hot Spring
 + Hotel Dinner

- Japanese Buffet
- Ishikari Hotpot Set
- Special Hokke + Sashimi

All images above are for references only.

4N' HOTEL

Niseko (1 Night)
 Hilton Niseko / similar

Sapporo (2 Nights)
 Hotel Lifort Sapporo / similar

Kitahiroshima (1 Night)
 Kitahiroshima Classe / similar

1 [Meal Onboard]
K. Lumpur → Chitose

Gather at KLIA 2, then depart to Hokkaido, Chitose Airport.

2 [Lunch | Hotel Dinner]
Chitose → Noboribetsu
→ Mt. Showa → Niseko

• Noboribetsu Date Jidaimura
(Included Entrance Ticket)

A theme park highlighting the Edo Period of Samurai town. Famous attraction like the ninja's house.

• Jigokudani (Hell Valley)
 450 metres wide crater formed by volcanic eruptions.

• Showa Shinzan Bear Ranch
(Included Entrance Ticket)

See the unique species of Hokkaido brown bears with a 2m long body.

• Mount Showa Shinzan
 A scenic view of the active volcano rising from the valley.

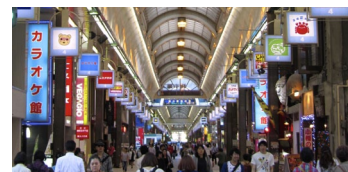
• Check in hotel & experience hot spring bath.
3 [Breakfast | Lunch | Dinner]
Niseko → Otaru → Sapporo

- **Otaru Music Box Museum**
It's packed with music boxes playing charming melodies. Collections includes musical glass works, ceramics and woodcraft. Perfect for souvenirs.
- **Glass Work Street Shops**
Many home-style glass works make extremely popular souvenirs in Otaru.


• Otaru Canal
 A narrow romantic waterway for the present and past.

• Shiroyo Koibito Chocolate Factory *(Without Factory Entrance)*
 Famous for their chocolate cookies all over Japan.

• Sapporo Clock Tower
 One of the Sapporo's most famous city attractions.

• Hokkaido's Former Government Building
 A monument to the early development of Hokkaido is affectionately called the "redbrick" by locals.

• Tanukikoji Shopping Street
 A huge attraction for tourists where you can buy local souvenirs, snacks and duty free shops.

4 [Breakfast]
Sapporo
• Free and Easy
 Enjoy half day walking tour with tour guide in Sapporo area.

5 [Breakfast | Lunch | Dinner]
Sapporo → Furano → Biei → Kitahiroshima
• Tomita Farm
 This is the most beautiful attractions in Hokkaido. There are beautiful, colorful flowers of different varieties in each flower fields.

• Patchwork Hill
 Seasonal crops of all colors create a patchwork effect on the hills of Biei. Enjoy a scenic drive through the winding country roads with landscapes of rolling hills, cast sky and beautiful greenery and flowers.

• Mitsui Outlet Park
 It has over 400 brand outlet stores selling not only fashion items but sporting, outdoor and interior goods.

6 [Breakfast Box | MOB]
Kitahiroshima → Chitose

After breakfast, transfer to Chitose Airport. It is the end of a pleasant trip!

Departure Date:				Company Stamp	Last Update: 24 August 2018
Flight Schedule:					
	Adult	Child	TOTAL		
Tour Fare:					
Airport Tax & Fuel S/C:					
Travel Insurance:					

Flight schedule, sequence of itinerary, hotel, meals arrangement are subject to change without prior notice.



6天4晚 行程编号: 6BSH



北海道多彩季节之旅

超人气富良野花田 · 美瑛的拼布之丘 · 浪漫的小樽运河 · 熊牧场 · 登别忍者时代村



- 日式自助餐
- 石狩锅特套餐
- 花鲫鱼+刺身特餐

★ 超值全包配套 ★

吃到饱!!!
日式烤肉+品尝3种螃蟹

1晚
HILTON温泉酒店
+酒店晚餐

所有图片仅供参考。

4晚酒店

新雪谷 (1晚)
Hilton Niseko 或同等级

札幌 (2晚)
Hotel Lifort Sapporo 或同等级

北广岛 (1晚)
Kitahiroshima Classe 或同等级

1 [机上餐饮] 吉隆坡 → 千岁机场

集合于吉隆坡第二国际机场，然后飞往北海道。

2 [午餐 | 酒店晚餐] 千岁机场 → 登别 → 昭和新山 → 新雪谷



• 登别伊达时代村 (含门票)
藉由娱乐体验日本江户时代的历史及文化的时代主题乐园。建筑、人物都充满着浓郁漂亮的传统日本风格。

• 地狱谷
火山爆发后，由熔岩所形成特殊的火山地形景观。

• 昭和新山熊牧场 (含门票)
熊牧场里可为棕熊喂食，见到食物的棕熊纷纷站起身来向游人招手卖萌，憨态可掬，非常可爱。

• 昭和新山
在1943年12月到1945年9月期间发生喷发，形成了这座300多米高的火山。也是日本最年轻的火山。

• 入住酒店，并尽情享受温泉泡汤乐。

3 [早餐 | 午餐 | 晚餐] 新雪谷 → 小樽 → 札幌

• 小樽音乐盒博物馆
博物馆门口左手边的大型蒸气音乐时钟，每隔十五分钟就会喷出烟雾及响起像气笛声的音乐。进入博物馆后，就被上千种的音乐盒吸引注，真是壮观。

• 玻璃制品商店街
各式玻璃艺术制品不论是纯欣赏或当纪念品，都令人赏心悦目。



• 小樽运河
北海道的一大标志性景观。

• 白色恋人巧克力工厂
(不含工厂入门) 是白色恋人巧克力夹心饼干和冰淇淋的生产地和展示地，更是一座洋溢着英伦气息的欧式古典城堡。

• 札幌钟楼
• 北海道政府旧址
札幌市早期建城时期美式新巴洛克风格建筑的政府大楼。



• 狸小路购物街

4 [早餐]
札幌
• 自由活动
享有半天导游带领步行游览札幌区域。

5 [早餐 | 午餐 | 晚餐] 札幌 → 富良野 → 美瑛 → 北广岛

• 富田农场
以波浪状的彩色花田与不同品种的薰衣草花田相结合的园艺景观而知名。

• 拼布之丘
这一带丘陵起伏，登上丘陵的高处，映入眼帘的便是由农作物的颜色形成的五颜六色的大地彩色拼图，美丽如画。

• 三井奥特莱斯购物城
以优惠的价格，销售样品及过季商品等。顾客可以优惠价格购买到日本的品牌商品。

6 [盒装早餐 | 机上餐饮] 北广岛 → 千岁机场

早餐后，送往千岁机场办理登机手续，然后启程回国。结束一段难忘又愉快的旅程。

Departure Date:	Company Stamp			Last Update: 24 August 2018
Flight Schedule:				
	Adult	Child	TOTAL	
Tour Fare:				
Airport Tax & Fuel S/C:				
Travel Insurance:				

航班时间、行程次序、酒店住宿和膳食安排，会有更动的可能性，恕不另行通知。